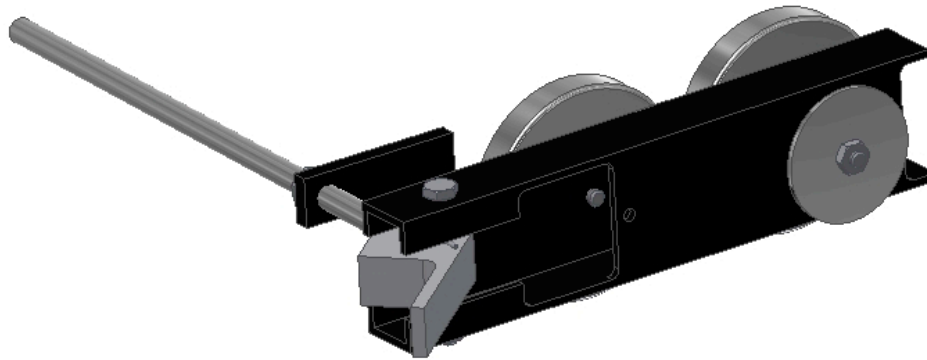


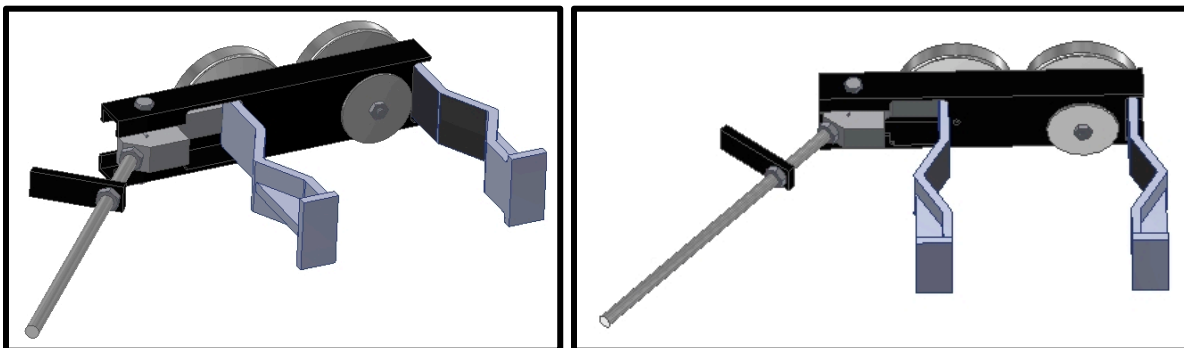


DOOR STOP OPERATING INSTRUCTIONS

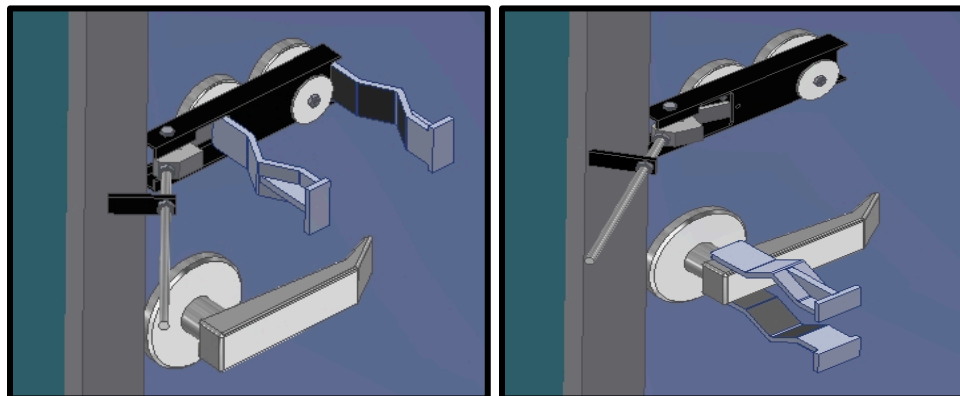
114 Potters Lane
Port Matilda, PA 16870
www.GISquaredTech.com



- 1.) Mount the door stop in the robot grippers as shown so that the swinging prop is held open in the retracted position.



- 2.) Mount the door stop onto the door. The magnet should be placed within $\frac{1}{2}$ " of the door frame. This is not mandatory, but the closer to the edge the door stop tool is placed, the better it will function.

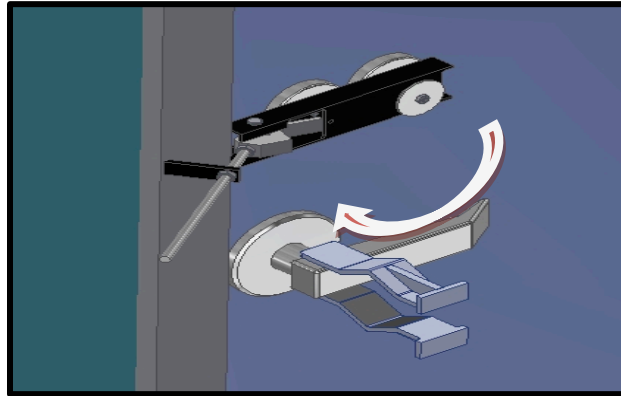




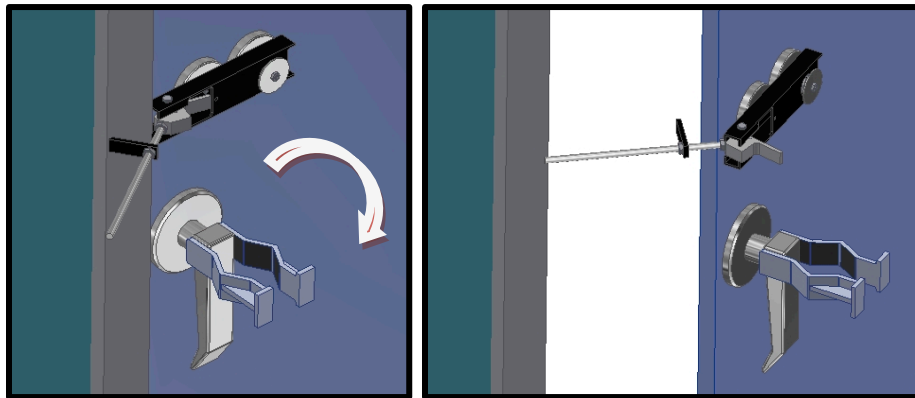
DOOR STOP OPERATING INSTRUCTIONS

114 Potters Lane
Port Matilda, PA 16870
www.GISquaredTech.com

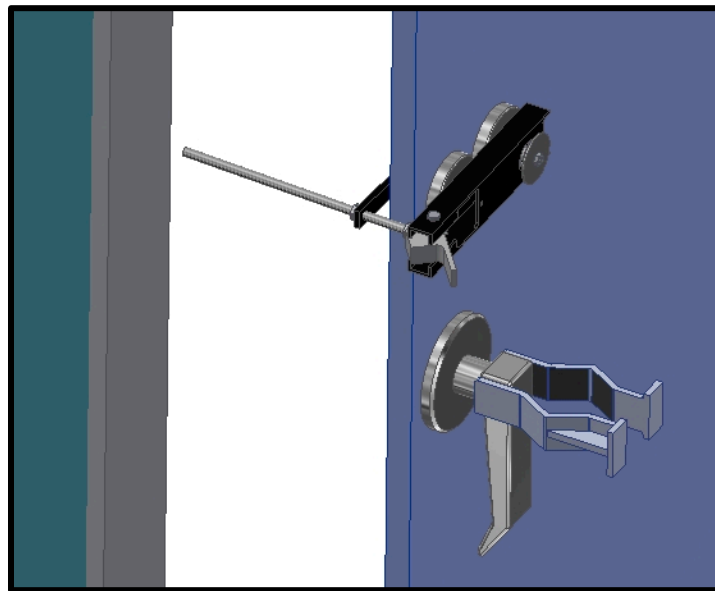
- 3.) Release the grip on the door stop when the location is set and the unit has snapped onto the door. The spring loaded prop will swing into the jam.



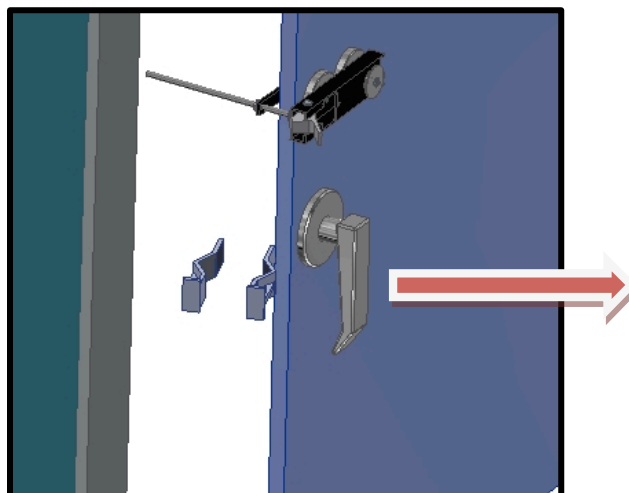
- 4.) Use the robot's grippers to open the door until the prop has swung into position.



- 5.) Release the door onto the door stop so that the tool latches into the door jam. Note: the door does not have to be fully opened, only far enough for the prop to swing into place. Excessive opening of the door and large impact forces onto the door stop will cause it to become dismantled from the door.



- 6.) With door propped open by the door stop, use the robot grippers to enter the opening and swing the door fully open.

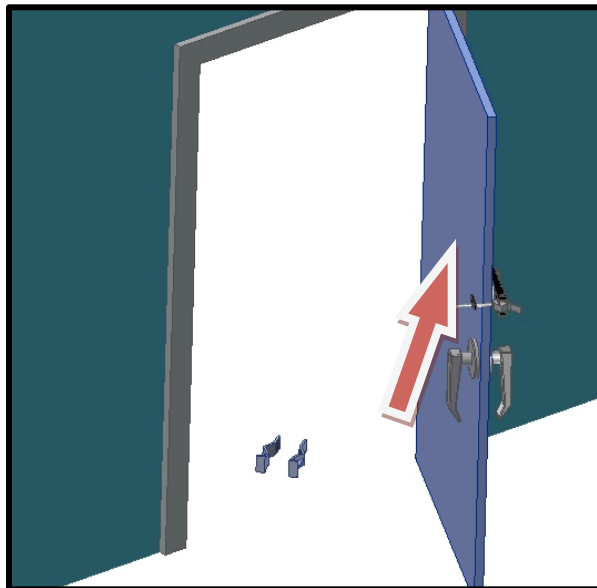




DOOR STOP OPERATING INSTRUCTIONS

114 Potters Lane
Port Matilda, PA 16870
www.GISquaredTech.com

7.) Swing door open and proceed through the door with the robot.



GI² Technologies, LLC
www.GISquaredTech.com